

VETA4

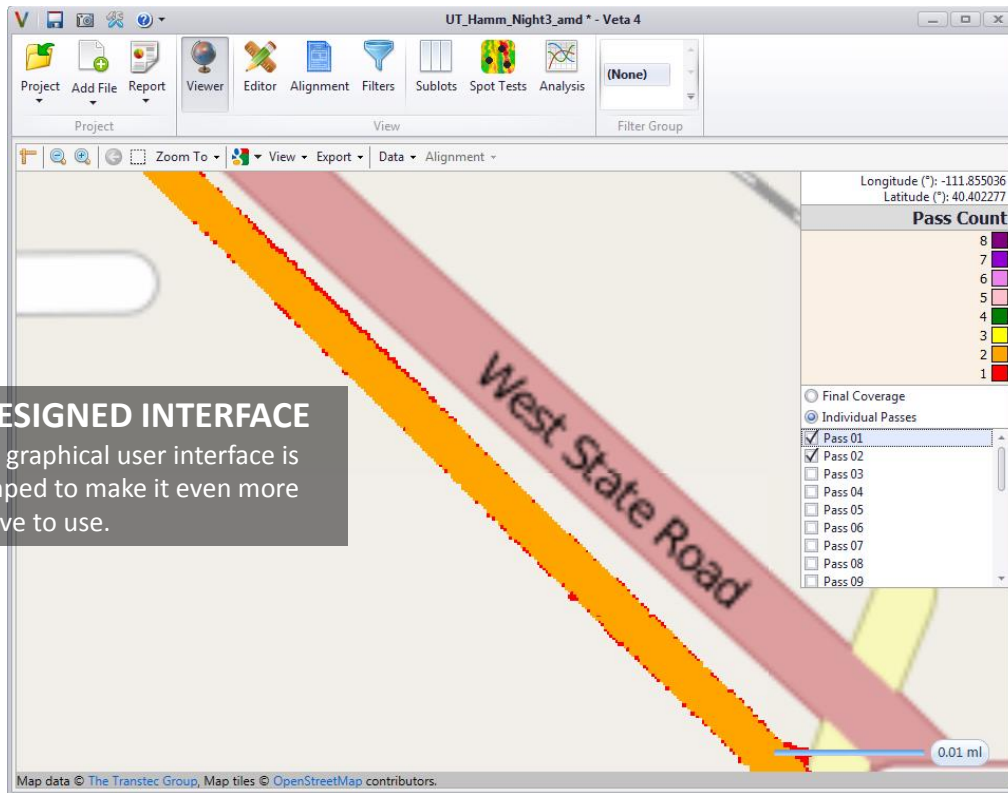
INTELLIGENT CONSTRUCTION

Many Systems **ONE SOFTWARE**

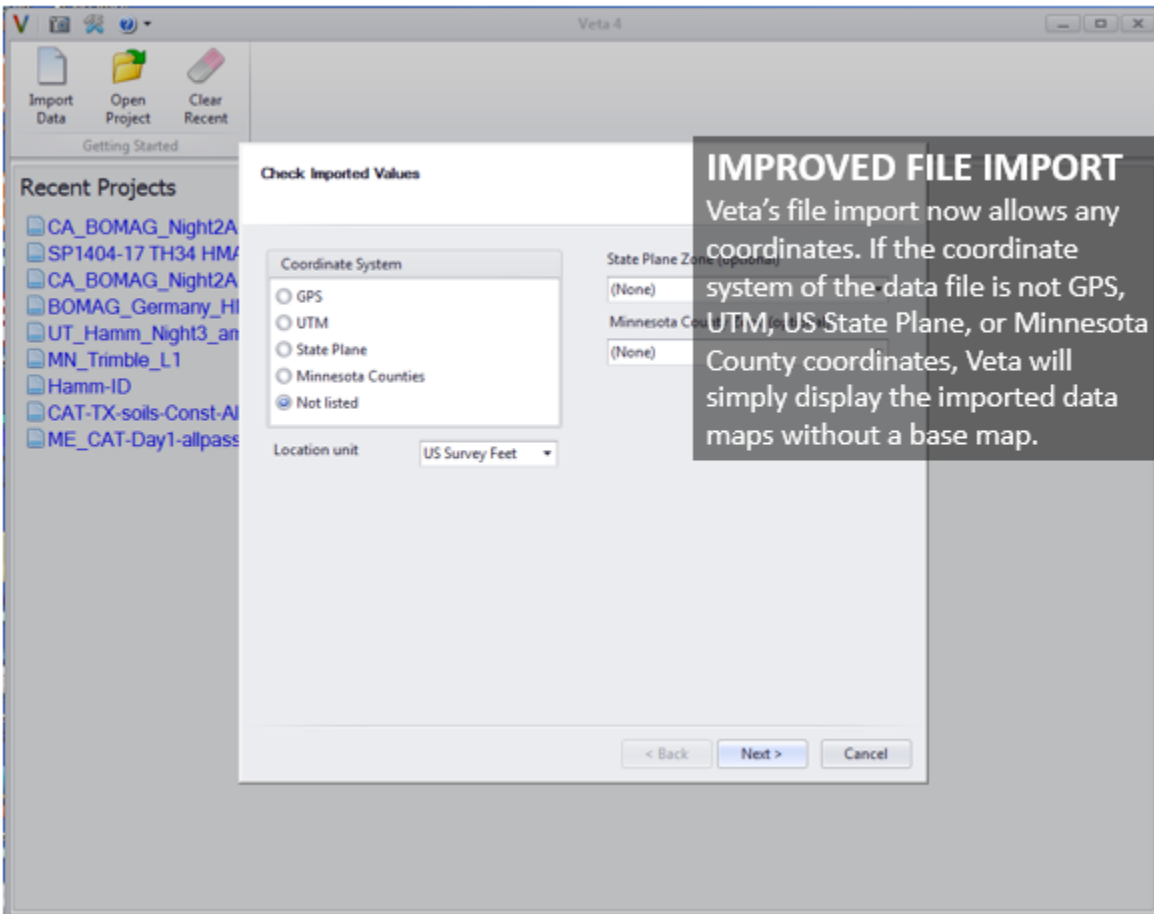


NEW FEATURES

- REDESIGNED INTERFACE
- IMPROVED FILE IMPORT
- LASER TEST ROLLING DATA
- GENERATE GRIDDED DATA
- OMNIPRESENT FILTER
- OMNIPRESENT MAPS
- IMPROVED MAP TOOLS
- FILE MANAGEMENT TOOL
- IMPROVED SUBLOT TOOL
- IMPROVED SPOT TEST TOOL
- PWL SPECIFICATION TARGET
- IMPROVED TEMP DIFF REPORT



REDESIGNED INTERFACE
 Veta's graphical user interface is revamped to make it even more intuitive to use.



IMPROVED FILE IMPORT
 Veta's file import now allows any coordinates. If the coordinate system of the data file is not GPS, UTM, US State Plane, or Minnesota County coordinates, Veta will simply display the imported data maps without a base map.



LASER TEST ROLLING DATA
 Veta can not only import IC and thermal profile data but also laser test rolling data from Ames.

GENERATE GRIDDED DATA

- If raw un-gridded data is available, Veta will grid the data and generate both all-passes data and final coverage data.
- If only all-passes data is available, Veta will generate final coverage data.
- The final coverage data will also be re-generated if users select a filter group to allow flexibility of viewing and analyzing data.

CA_BOMAG_Night2A-Veta4 * - Veta 4

Project Add File Report Viewer Editor Alignment Filters Sublots Spot Tests Analysis (None) NB

Zoom To View Export Data Alignment

Easting (m): 599855.2
 Northing (m): 4256189.8

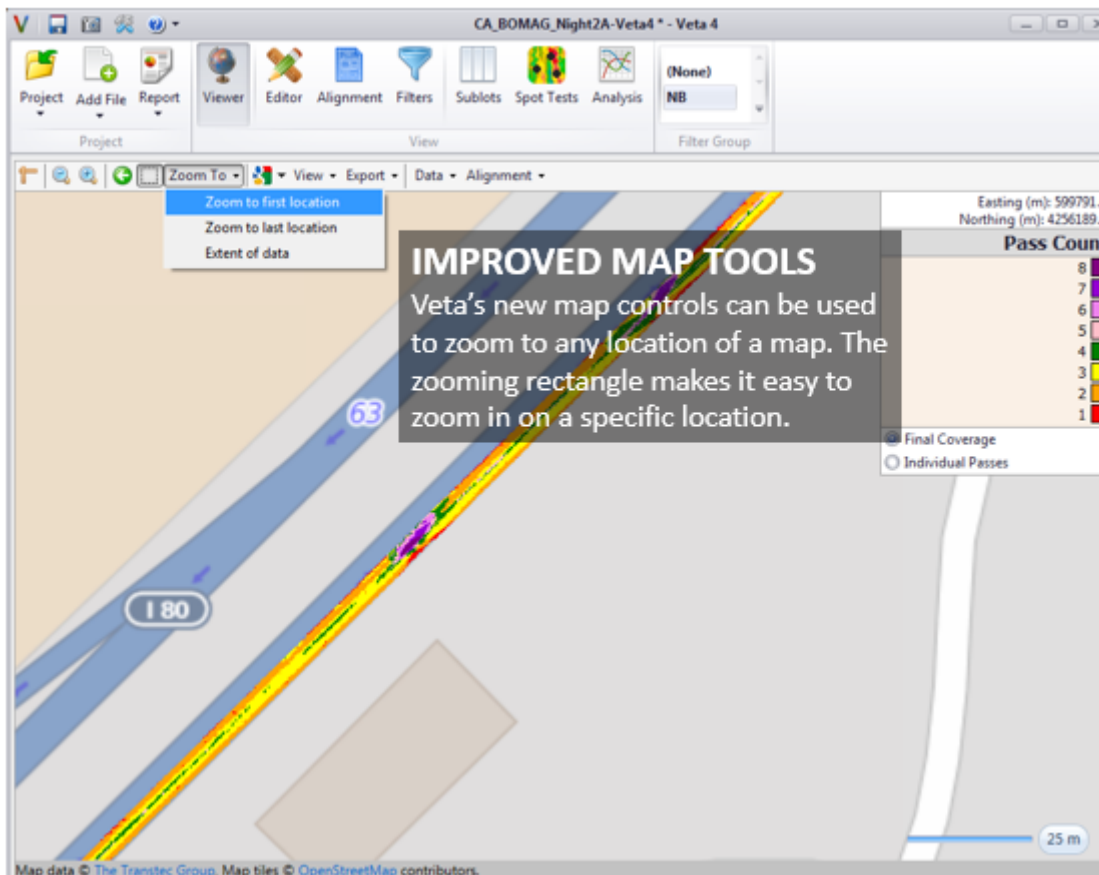
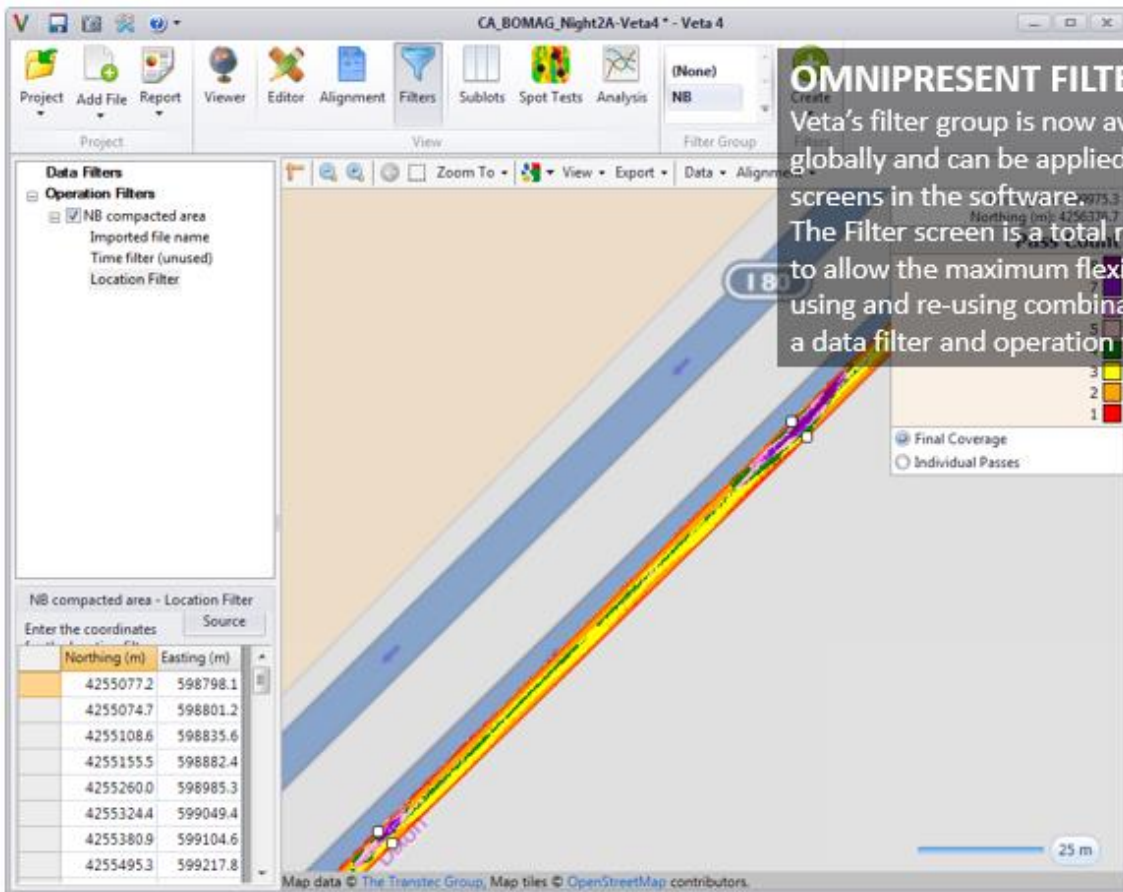
Pass Count

8	■
7	■
6	■
5	■
4	■
3	■
2	■
1	■

Final Coverage
 Individual Passes

- Pass 01
- Pass 02
- Pass 03
- Pass 04
- Pass 05
- Pass 06
- Pass 07
- Pass 08
- Pass 09

Map data © The Transtec Group, Map tiles © OpenStreetMap contributors.



SP1404-17 TH34 HMA L2 24hr Filter - Veta 4

Project Add File Report Viewer Editor Alignment Filters Sublots Spot Tests Analysis

06.04.15 EB
06.04.15 WB

Name	Size (KB)	Last modified	Time imported	Data Found	Invalid Coordinates	Imported	Duplicates	Added
05.12.15 Lift 2 EB 24hr Filter.csv	82,591	May 15, 2015 7:53 AM	May 15, 2015 7:55 AM	458,625	0	458,625	0	458,625
05.15.15 Lift 2 WB 24hr Filter.csv	98,811	May 18, 2015 10:01 AM	May 18, 2015 11:27 AM	548,578	0	548,578	0	548,578
05.19.15 Lift 2 EB 24hr Filter.csv	35,254	May 21, 2015 10:26 AM	May 21, 2015 1:25 PM	194,737	0	194,737	0	194,737
05.19.15 Lift 2 WB 24hr Filter.csv	24,100	May 21, 2015 10:26 AM	May 21, 2015 1:41 PM	135,945	0	135,945	0	135,945
05.29.15 Lift 2 WB 24hr Filter.csv	26,600	Jun 02, 2015 7:59 AM	Jun 03, 2015 8:26 AM	143,279	0	143,279	0	143,279
05.30.15 Lift 2 WB 24hr Filter.csv	17,452	Jun 02, 2015 7:59 AM	Jun 03, 2015 8:33 AM	93,961	0	93,961	0	93,961
05.30.15 Lift 2 EB 24hr Filter.csv	15,983	Jun 02, 2015 7:59 AM	Jun 03, 2015 8:38 AM	88,052	0	88,052	0	88,052

FILE MANAGEMENT TOOL

Veta's Editor can now be used to manage imported files including removing files, crucial for lengthy projects.

Original File Information
Time,CellIN_FT,CellE_FT,Elevation_FT,PassCount,Log

Zoom To View Export Data Alignment

Easting (ft): 619821.8
Northing (ft): 111109.0

Pass Count

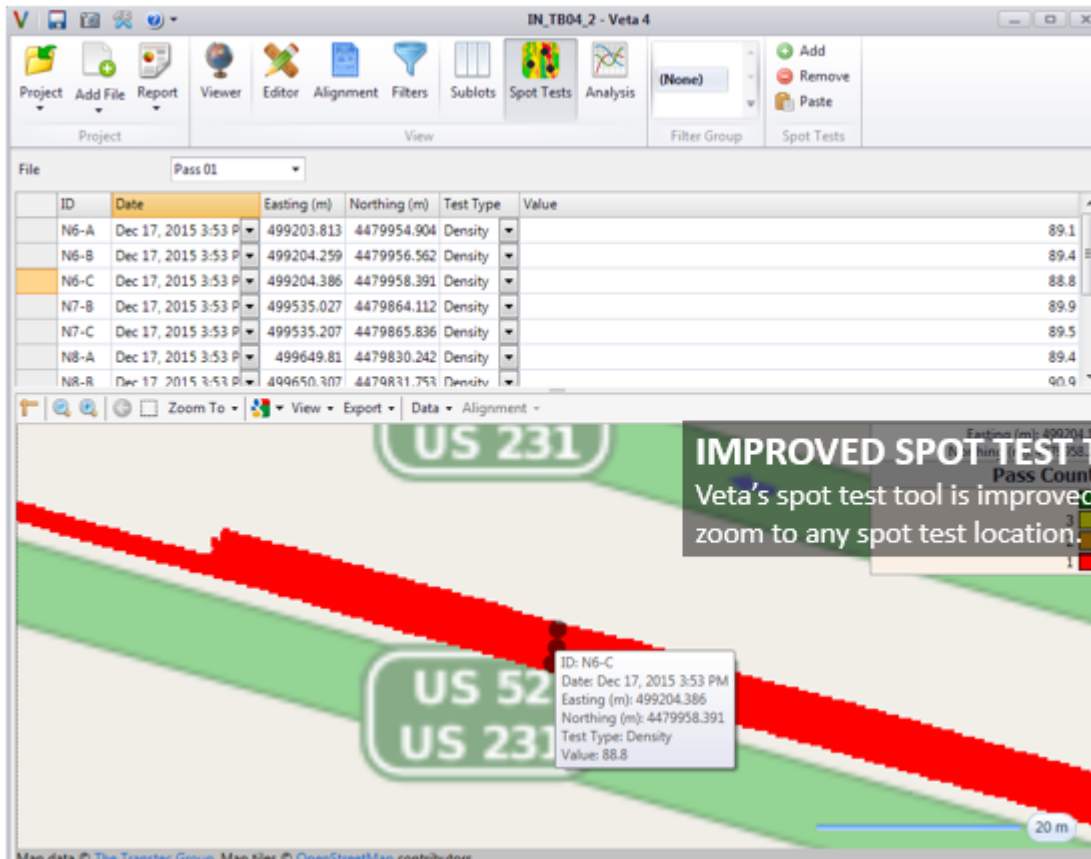
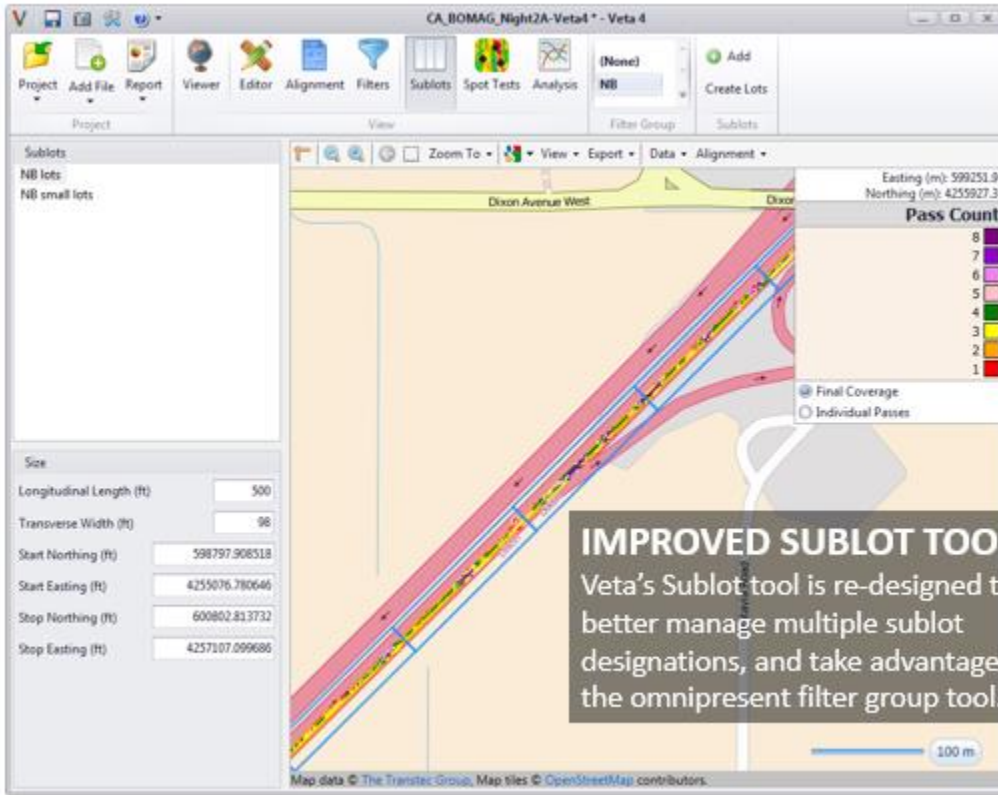
3	Green
2	Yellow
1	Red

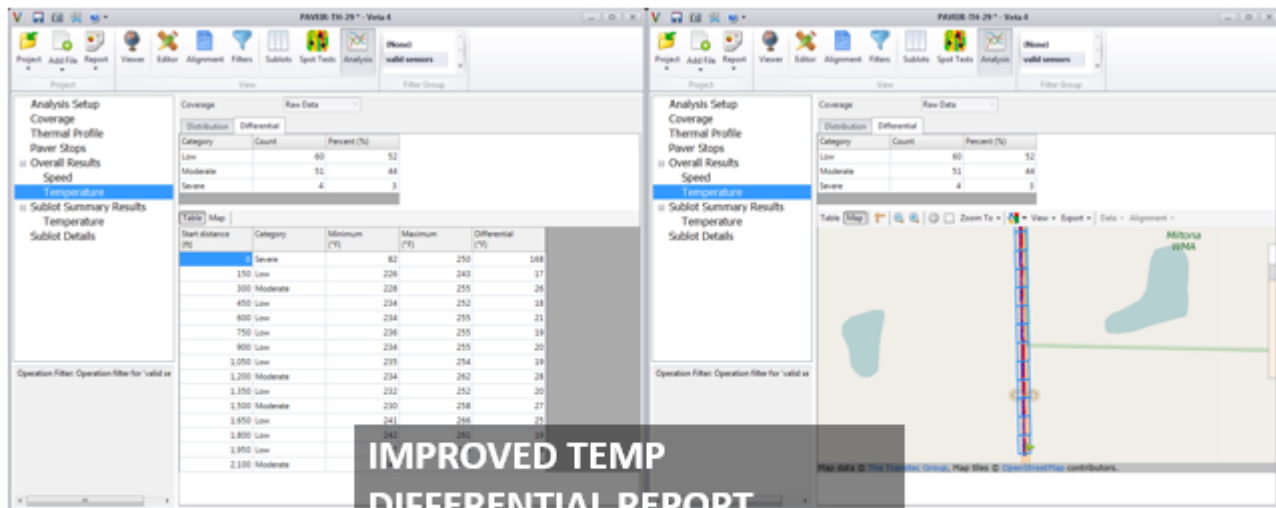
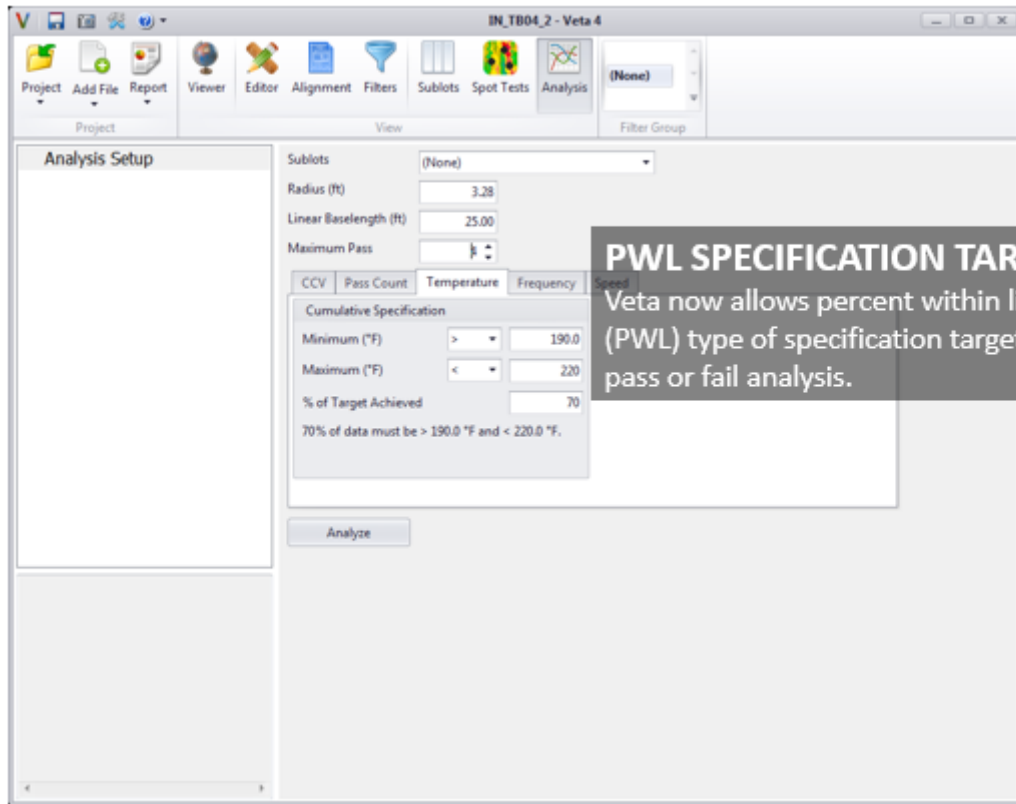
160th Ave South

Tansem Lake

0.1 ml

Map data © The Transtec Group, Map tiles © OpenStreetMap contributors.







www.IntelligentCompaction.com

CONTACT INFORMATION

Rebecca A. Embacher

Advanced Materials and Technology Engineer
MnDOT Office of Materials & Road Research, MS645
1400 Gervais Avenue | Maplewood, MN 55109 USA
T: +1 (651).366.5525
M: +1 (651).373.5222
Rebecca.Embacher@state.mn.us

George K. Chang, PhD, PE (NJ)

Project Manager
The Transtec Group, Inc.
6111 Balcones Drive, Austin TX 78731 USA
T: +1 (512) 451-6233
M: +1 (512) 659-1231
GKChang@TheTranstecGroup.com