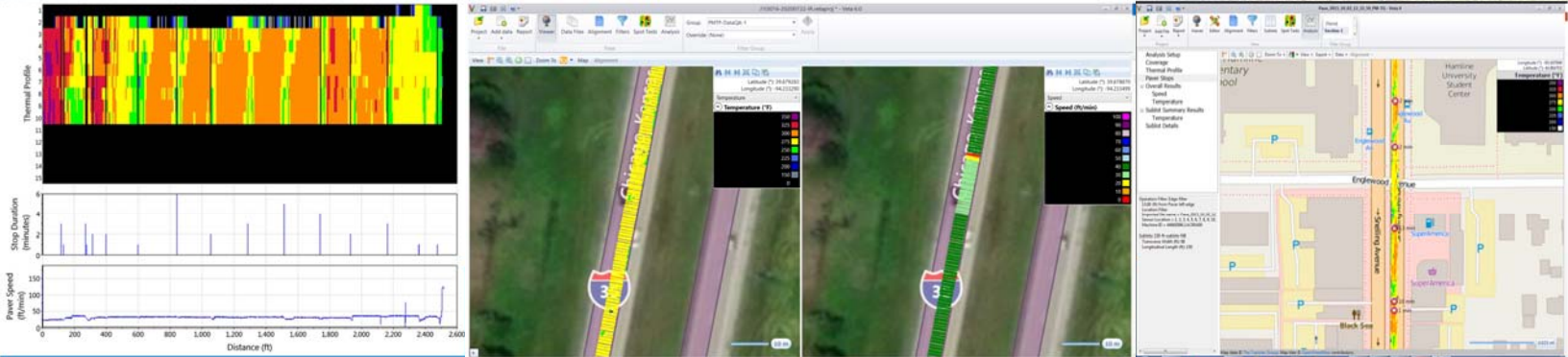




# Veta for PMTP Workshop

## Intelligent Construction Data Management



# **Veta for PMTP Workshop**

## **Intelligent Construction Data Management**

### **TABLE OF CONTENTS**

WORKSHOP AGENDA

CONTACT INFORMATION

WORKSHOP SLIDES

Session 1 – PMTP Field Data Collection & Management

Session 2 – PMTP Data Analysis & Interpretation

VETA SOFTWARE

HANDS-ON SAMPLES

# Workshop Agenda

## OBJECTIVES

- ✓ To understand the basics of the Paver-Mounted Thermal Profiler (PMTP) technologies and Veta software.
- ✓ To understand PMTP specifications and how to meet the requirements
- ✓ To understand the PMTP data collection and data analysis.
- ✓ To practice hands-on Veta analysis.

## WORKSHOP AGENDA

US Central Time

AM

10:00 am Session 1 – PMTP Data Collection & Management

11:20 am Break

11:40 am Session 2 – PMTP Data Analysis & Interpretation

01:00 pm Adjourn

Intelligent Construction website: <http://www.IntelligentConstruction.com/>

Transtec Group website: [www.TheTranstecGroup.com](http://www.TheTranstecGroup.com)

International Society for Intelligent Construction ([www.IS-IC.org](http://www.IS-IC.org))

# Contact Information

If you would like more information or have questions or comments regarding any of the topics presented at this workshop please contact the following. Thank you for your participation in this workshop.

## TRAINERS



Dr. George K. Chang, P.E.  
Director of Research  
The Transtec Group  
Address: 6111 Balcones Drive, Austin, Texas USA  
Phone: +1-512-451-6233  
Email: GKchang@TheTranstecGroup.com

Dr. George Chang is recognized as an expert on pavement smoothness and intelligent compaction/construction technologies. His research, teaching, specification development, and software tools (such as ProVAL and Veta) have helped make significant technological advancements in the above fields. Dr. Chang is the co-founder and the president of the International Society for Intelligent Construction (ISIC). Dr. Chang has been the principal investigator for numerous projects that enhancing pavement materials/structures, pavement surface characteristics, etc. Recognized for his energetic, lively teaching style, Dr. Chang delivers smoothness and intelligent compaction/construction-related workshops worldwide. Dr. Chang has been the chairman of the International Intelligent Construction Technologies Group (IICTG), Road Profile Users' Group (RPUG), TRB AFP50 (formerly AFD90) Pavement Surface Properties and Vehicle Interaction committee, etc. Dr. Chang received many awards, including a Kummer Lecture Award, Meyer-Horne Award, and ASTM Billiard-Stubstad Award from the ASTM; and NOVA award from Construction Innovation Forum, Founders' Award from RPUG. Emeritus Member from TRB. His research work has been featured in over 50 professional publications and 100+ reports.



Mr. Amanda L. Gilliland, P.E.  
Project Manager  
The Transtec Group  
Email: AmandaG@TheTranstecGroup.com

Amanda has over eight years of hands-on experience with intelligent compaction/construction technologies. Before working for The Transtec Group, she worked in Alaska for a heavy civil general contractor specializing in highway and airport construction. They were the first contractor in Alaska to use intelligent compaction, and Amanda understands how to implement new technologies at the project level successfully. She used intelligent compaction as a quality control tool to consistently achieve maximum density bonuses and is a valuable resource for agencies and contractors wanting to implement and benefit from intelligent construction technologies. Amanda is currently a committee research coordinator for the TRB AKC60 (formerly AFH60) asphalt pavement construction committee; and a technical committee member of the International Society for Intelligent Construction (ISIC).

# **Workshop Slides**